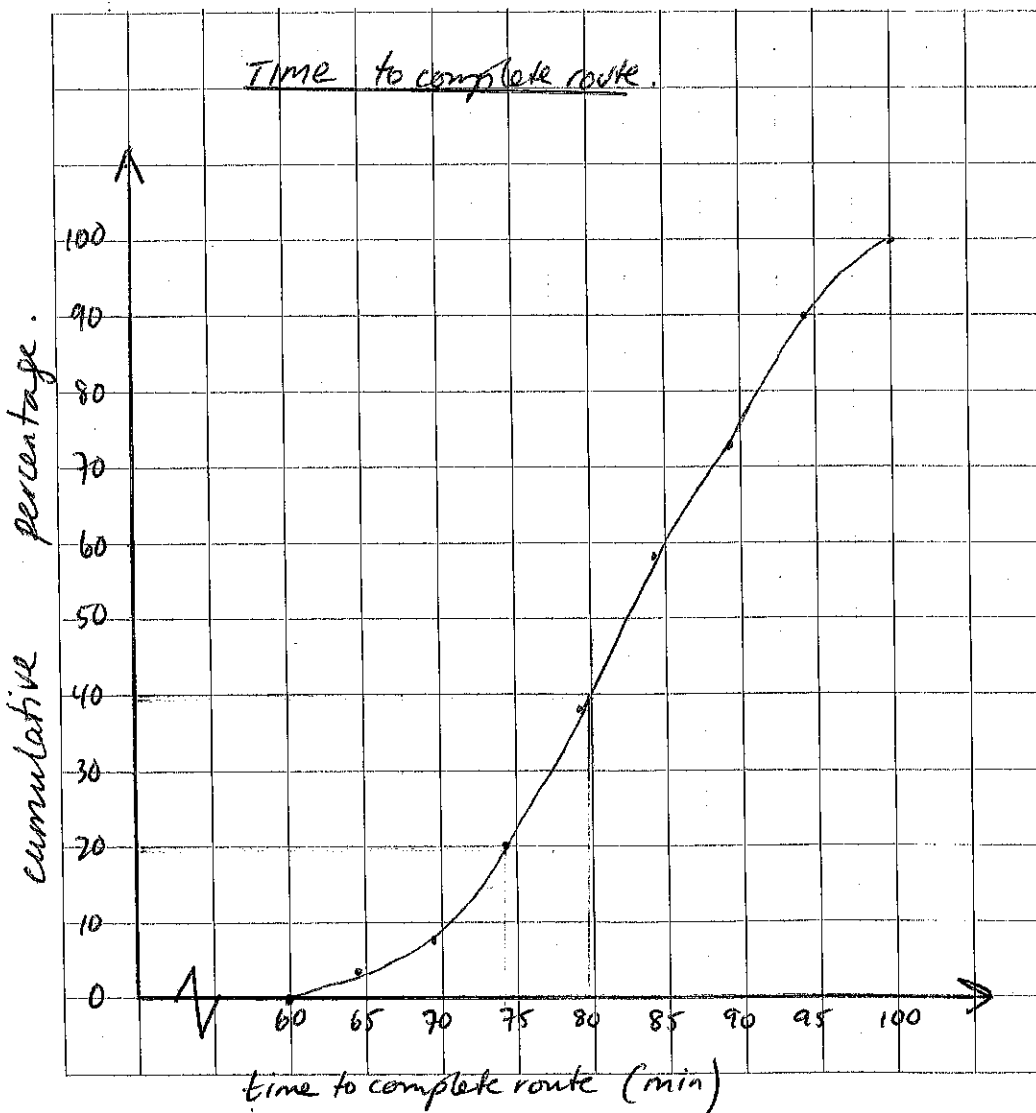


EX 2.2 Question 16.

class.	tally	f.	cf.	c %.
60-64		2	2	3.3
65-69		3	5	8.3
70-74		7	12	20
75-79		11	23	38.3
80-84		12	35	58.3
85-89		9	44	73.3
90-94		10	54	90
95-99		6	60	100
		60		



c) Reading off graph.

80min is about 40%

So would expect courier to complete route in under 80 min about 40% of time. ✓

d) Only want to give bonus 20% of time so about 74 minutes would mean only have to pay 20% of time.

Other answers possible!